



Certificate of Analysis

Powered by Confident Cannabis

CBD Unlimited Inc.

Cave Creek, AZ 85331
 jenny@cbdunlimited.com
 (480) 999-0097
 Lic. #CBD

Sample: 2111DBL0214.10951

METRC Sample:
 Lot #: V1912D106

Strain: Isolate
 Ordered: 11/17/2021; Sampled: 11/18/2021; Completed: 11/23/2021

Maggie's Balm 1000mg 2oz

Topical, Other



Pesticides



Microbials



Mycotoxins



Heavy Metals



Foreign Matter



Solvents

Terpenes

Analyzed by 300.13 GC/FID and GC/MS

293.842 mg/unit
 Total Terpenes



Compound	LOQ mg/unit	Mass mg/unit	Mass mg/g	Relative Concentration
Linalool	7.088	109.363	1.929	
Geraniol	7.088	103.512	1.826	
β-Caryophyllene	7.088	32.977	0.582	
Caryophyllene Oxide	7.088	17.963	0.317	
Eucalyptol	7.088	15.060	0.266	
Camphene	7.088	11.975	0.211	
trans-Ocimene	2.481	2.994	0.053	
α-Bisabolol	7.088	<LOQ	<LOQ	
α-Humulene	7.088	<LOQ	<LOQ	
α-Pinene	7.088	<LOQ	<LOQ	
α-Terpinene	7.088	<LOQ	<LOQ	
β-Myrcene	7.088	<LOQ	<LOQ	
β-Pinene	7.088	<LOQ	<LOQ	
cis-Nerolidol	4.607	<LOQ	<LOQ	
cis-Ocimene	4.607	<LOQ	<LOQ	
δ-3-Carene	7.088	<LOQ	<LOQ	
δ-Limonene	7.088	<LOQ	<LOQ	
γ-Terpinene	7.088	<LOQ	<LOQ	
Guaiol	7.088	<LOQ	<LOQ	
Isopulegol	7.088	<LOQ	<LOQ	
p-Cymene	7.088	<LOQ	<LOQ	
Terpinolene	7.088	<LOQ	<LOQ	
trans-Nerolidol	2.481	<LOQ	<LOQ	

Cannabinoid Relative Concentration

Analyzed by 300.18 UHPLC/PDA

<LOQ
 Δ9-THC + Δ8-THC

996.229 mg/unit
 CBD

Not Tested

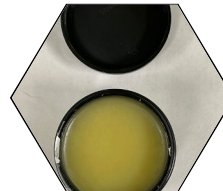
pH: NT
 Aw: NT

996.229 mg/unit
 Total Cannabinoids

Not Tested
 Homogeneity

Compound	LOQ mg/unit	Mass mg/unit	Mass mg/g	Relative Concentration
CBC	3.323	<LOQ	<LOQ	
CBCa	3.323	<LOQ	<LOQ	
CBD	3.323	996.229	17.570	
CBDa	3.323	<LOQ	<LOQ	
CBDV	3.323	<LOQ	<LOQ	
CBDVa	3.323	<LOQ	<LOQ	
CBG	3.323	<LOQ	<LOQ	
CBGa	3.323	<LOQ	<LOQ	
CBL	3.323	<LOQ	<LOQ	
CBN	3.323	<LOQ	<LOQ	
Δ8-THC	3.323	<LOQ	<LOQ	
Δ9-THC	3.323	<LOQ	<LOQ	
THCa	3.323	<LOQ	<LOQ	
THCV	3.323	<LOQ	<LOQ	
THCVa	3.323	<LOQ	<LOQ	

1 Unit = Maggie's Balm 1000mg 2oz, 56.7g
 Total THC = 0.877 x THC-A + Δ9-THC + Δ8-THC; Total CBD = CBDa * 0.877 + CBD



Benjamin G.M. Chew, Ph.D.
 Benjamin G.M. Chew, Ph.D.
 Laboratory Director

Glen Marquez
 Glen Marquez
 Quality Control



4439 Polaris Ave
 Las Vegas, NV
 (702) 728-5180

www.dblabslv.com

This report is considered highly confidential and the sole property of the customer. DB Labs will not discuss any part of this study with personnel other than those authorized by the client. The results described in this report only apply to the samples analyzed. The reported result is based on a sample weight with the applicable moisture content for that sample. LOQ = Limit of Quantitation. Pesticide LOQ = Instrument Limit of Quantitation. NA = Not Analyzed. ND = Not Detected. NR = Not Reported. NT = Not Tested. PGR = Plant Growth Regulator. Unless otherwise stated all quality control samples performed within specifications established by the Laboratory. This product has been tested by DB Labs, LLC (MME# 61887736101164525768) using valid testing methodologies and a quality system as required by Nevada state law. Edibles are picked up prior to final packaging unless otherwise stated. Values reported relate only to the product tested. The uncertainty of measurement associated with the measurement result reported in this certificate is available from the organization upon request. DB Labs makes no claims as to the efficacy, safety or other risks associated with any detected or non-detected levels of any compounds reported herein. This Certificate shall not be reproduced except in full, without the written approval of DB Labs.



Certificate of Analysis

Powered by Confident Cannabis

CBD Unlimited Inc.

Cave Creek, AZ 85331
 jenny@cbdunlimited.com
 (480) 999-0097
 Lic. #CBD

Sample: 2111DBL0214.10951

METRC Sample:
 Lot #: V1912D106

Strain: Isolate
 Ordered: 11/17/2021; Sampled: 11/18/2021; Completed: 11/23/2021

Maggie's Balm 1000mg 2oz

Topical, Other



Pesticides

Analyzed by 300.9 LC/MS/MS and GC/MS/MS

Pass

Compound	LOQ	Limit	Mass	Status
	PPB	PPB	PPB	
Abamectin	10	200	<LOQ	Pass
Acequinocyl	10	4000	<LOQ	Pass
Bifenazate	10	400	<LOQ	Pass
Bifenthrin	10	100	<LOQ	Pass
Cyfluthrin	10	2000	<LOQ	Pass
Cypermethrin	10	1000	<LOQ	Pass
Daminozide	10	800	<LOQ	Pass
Dimethomorph	10	2000	<LOQ	Pass
Etoxazole	10	400	<LOQ	Pass
Fenhexamid	10	1000	<LOQ	Pass
Flonicamid	10	1000	<LOQ	Pass
Fludioxonil	10	500	<LOQ	Pass
Imidacloprid	10	500	<LOQ	Pass
Myclobutanil	10	400	<LOQ	Pass
Pacllobutrazol	10	400	<LOQ	Pass
Piperonyl Butoxide	10	3000	<LOQ	Pass
Pyrethrins	10	2000	<LOQ	Pass
Quintozene	10	800	<LOQ	Pass
Spinetoram	10	1000	<LOQ	Pass
Spinosad	10	1000	<LOQ	Pass
Spirotetramat	10	1000	<LOQ	Pass
Thiamethoxam	10	400	<LOQ	Pass
Trifloxystrobin	10	1000	<LOQ	Pass
Plant Growth Regulators	10	50	<LOQ	Pass

Microbials

Analyzed by 300.1 Plating/QPCR

Pass

Quantitative Analysis	LOQ	Limit	Mass	Status
	CFU/g	CFU/g	CFU/g	
Bile-Tolerant Gram-Negative Bacteria	10	1000	<LOQ	Pass
Yeast & Mold	10	10000	<LOQ	Pass

Qualitative Analysis	Detected or Not Detected	Status
E. Coli	Not Detected	Pass
Salmonella	Not Detected	Pass

Mycotoxins

Analyzed by 300.2 Elisa

Pass

Mycotoxin	LOQ	Limit	Mass	Status
	PPB	PPB	PPB	
Aflatoxins	4.0	20.0	<LOQ	Pass
Ochratoxin A	2.0	20.0	<LOQ	Pass

Heavy Metals

Analyzed by 300.8 ICP/MS

Pass

Element	LOQ	Limit	Mass	Status
	PPB	PPB	PPB	
Arsenic	61	2000	<LOQ	Pass
Cadmium	61	820	<LOQ	Pass
Lead	61	1200	<LOQ	Pass
Mercury	61	400	<LOQ	Pass

Residual Solvents

Analyzed by 300.13 GC/FID and GC/MS

Pass

Compound	LOQ	Limit	Mass	Status
	PPM	PPM	PPM	
Butanes	80	500	<LOQ	Pass
Ethanol	80		<LOQ	Tested
Heptanes	80	500	<LOQ	Pass
Propane	80	500	<LOQ	Pass



Benjamin G.M. Chew
 Benjamin G.M. Chew, Ph.D.
 Laboratory Director

Glen Marquez
 Glen Marquez
 Quality Control



4439 Polaris Ave
 Las Vegas, NV
 (702) 728-5180
 www.dblabslv.com

This report is considered highly confidential and the sole property of the customer. DB Labs will not discuss any part of this study with personnel other than those authorized by the client. The results described in this report only apply to the samples analyzed. The reported result is based on a sample weight with the applicable moisture content for that sample. LOQ = Limit of Quantitation. Pesticide LOQ = Instrument Limit of Quantitation, NA = Not Analyzed, ND = Not Detected, NR = Not Reported, NT = Not Tested. PGR = Plant Growth Regulator. Unless otherwise stated all quality control samples performed within specifications established by the Laboratory. This product has been tested by DB Labs, LLC (MME# 61887736101164525768) using valid testing methodologies and a quality system as required by Nevada state law. Edibles are picked up prior to final packaging unless otherwise stated. Values reported relate only to the product tested. The uncertainty of measurement associated with the measurement result reported in this certificate is available from the organization upon request. DB Labs makes no claims as to the efficacy, safety or other risks associated with any detected or non-detected levels of any compounds reported herein. This Certificate shall not be reproduced except in full, without the written approval of DB Labs.



Certificate of Analysis

Powered by Confident Cannabis

CBD Unlimited Inc.

Cave Creek, AZ 85331
jenny@cbdunlimited.com
(480) 999-0097
Lic. #CBD

Sample: 2111DBL0214.10951

METRC Sample:
Lot #: V1912D106


Strain: Isolate

Ordered: 11/17/2021; Sampled: 11/18/2021; Completed: 11/23/2021

Maggie's Balm 1000mg 2oz

Topical, Other



Mycotoxins					Pass
Analyzed by 300.2 Elisa					
Mycotoxin	LOQ	Limit	Mass	Status	
Aflatoxins	4.0	20.0	<LOQ	Pass	
Ochratoxin A	2.0	20.0	<LOQ	Pass	



Benjamin G.M. Chew
Benjamin G.M. Chew, Ph.D.
Laboratory Director

Glen Marquez
Glen Marquez
Quality Control

This report is considered highly confidential and the sole property of the customer. DB Labs will not discuss any part of this study with personnel other than those authorized by the client. The results described in this report only apply to the samples analyzed. The reported result is based on a sample weight with the applicable moisture content for that sample. LOQ = Limit of Quantitation. Pesticide LOQ = Instrument Limit of Quantitation, NA = Not Analyzed. ND = Not Detected. NR = Not Reported. NT = Not Tested. PGR = Plant Growth Regulator. Unless otherwise stated all quality control samples performed within specifications established by the Laboratory. This product has been tested by DB Labs, LLC (MME# 61887736101164525768) using valid testing methodologies and a quality system as required by Nevada state law. Edibles are picked up prior to final packaging unless otherwise stated. Values reported relate only to the product tested. The uncertainty of measurement associated with the measurement result reported in this certificate is available from the organization upon request. DB Labs makes no claims as to the efficacy, safety or other risks associated with any detected or non-detected levels of any compounds reported herein. This Certificate shall not be reproduced except in full, without the written approval of DB Labs.



4439 Polaris Ave
Las Vegas, NV
(702) 728-5180
www.dblabslv.com